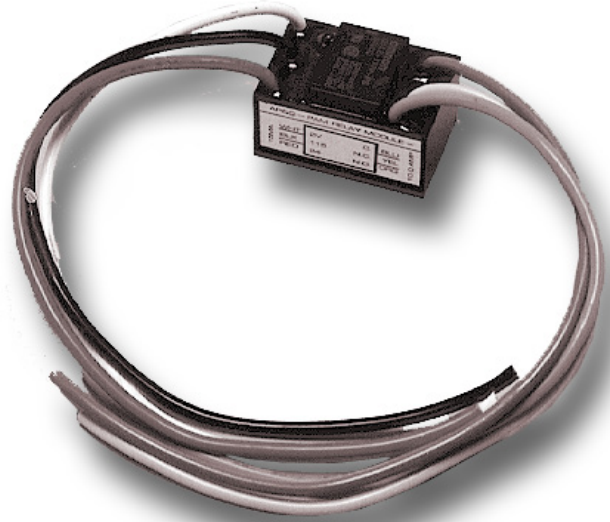




# Multi-Voltage Control Relay

## Model PAM-1



### Overview

The PAM-1 Relay is encapsulated multi-voltage device providing 10 Amp Form C contacts. The relay may be energized by one of three input voltages: 24 Vac, 24 Vdc, or 115 Vac.

A red LED is provided which, when illuminated, indicates the relay coil is energized.

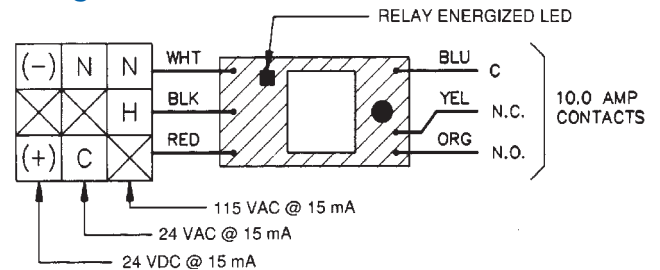
The PAM-1 may be mounted by using the double-sided adhesive tape, the self-drilling screw, or loosely placed in a back box.

The PAM-1 is ideal for applications where remote relays are required for control or status feedback. They are suitable for use with HVAC, Temperature Control, Fire Alarm, Security, Energy Management, and Lighting Control Systems.

### Standard Features

- Completely encapsulated 10 Amp relay
- Relay may be energized by one of three input voltages
- Contains a red LED which illuminates when relay coil is energized
- May be mounted by double-sided adhesive tape, self-drilling screw or placed in back box
- Convenient 6 in (150mm) wire leads for electrical connections

### Wiring





**Detection & alarm since 1872**

U.S.  
T 888-378-2329  
F 866-503-3996

Canada  
Chubb Edwards  
T 519 376 2430  
F 519 376 7258

Southeast Asia  
T : +65 6391 9300  
F : +65 6391 9306

India  
T : +91 80 4344 2000  
F : +91 80 4344 2050

Australia  
T +61 3 9239 1200  
F +61 3 9239 1299

Europe  
T +32 2 725 11 20  
F +32 2 721 86 13

Latin America  
T 305 593 4301  
F 305 593 4300

[utcfireandsecurity.com](http://utcfireandsecurity.com)

© 2010 UTC Fire & Security.  
All rights reserved.

## Specifications

Power Requirements	15 mA per position @ 24 Vdc, 24 Vac, 115 Vac
Relay	UL Recognized SPDT
Contact Rating	10 Amps @ 115 Vac
Ambient Temperature	-58°F to 185°F (-50°C to 85°C)
Approvals	UL Recognized components
Dimensions	1.5 H x 1 W .875 D inches (38.1 x 24.5 x 22.2 mm) with 6 inch (150mm) wire leads 18 AWG (1.00mm <sup>2</sup> )

## Ordering Information

Model	Description
PAM-1	Single SPDT relay with LED double-sided adhesive tape, mounting screw and 6 in (150 mm) leads.